

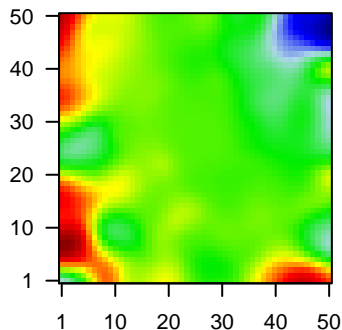
MPI-233

Global Summary

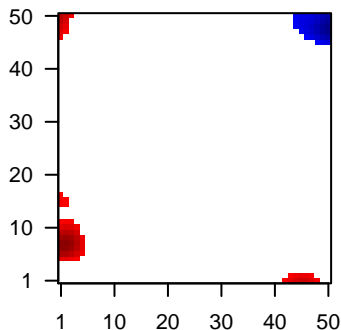
%DE = 0.05
 # genes with fdr < 0.2 = 641 (380 + / 261 -)
 # genes with fdr < 0.1 = 516 (305 + / 211 -)
 # genes with fdr < 0.05 = 403 (245 + / 158 -)
 # genes with fdr < 0.01 = 259 (163 + / 96 -)
 # genes in genesets = 13152

<FC> = 0
 <t-score> = 0.04
 <p-value> = 0.24
 <fdr> = 0.95

Portrait



Regulated Metagenes



Global Genelist

Rank	ID	log(FC)	fdr	p-value	Description
1	201820_at	2.54	2e-16	3e-13	22 x 12 keratin 5 [Source:HGNC Symbol;Acc:HGNC:6442]
2	203645_s_at	-1.7	2e-16	3e-13	8 x 10 CD163 molecule [Source:HGNC Symbol;Acc:HGNC:1631]
3	203760_s_at	-1.36	2e-16	3e-13	0 x 20 Src like adaptor [Source:HGNC Symbol;Acc:HGNC:10902]
4	203819_s_at	-1.73	2e-16	3e-13	49 x 45 insulin like growth factor 2 mRNA binding protein 3 [Source:H
5	206018_at	2.7	2e-16	3e-13	6 x 32 forkhead box G1 [Source:HGNC Symbol;Acc:HGNC:3811]
6	206373_at	3.17	2e-16	3e-13	19 x 21 Zic family member 1 [Source:HGNC Symbol;Acc:HGNC:1287]
7	206413_s_at	2.24	2e-16	3e-13	43 x 49 T cell leukemia/lymphoma 1B [Source:HGNC Symbol;Acc:HC
8	209260_at	2.17	2e-16	3e-13	21 x 12 stratifin [Source:HGNC Symbol;Acc:HGNC:10773]
9	210546_x_at	2.22	2e-16	3e-13	10 x 27 cancer/testis antigen 1A [Source:HGNC Symbol;Acc:HGNC:2
10	211674_x_at	2.32	2e-16	3e-13	10 x 27 cancer/testis antigen 1A [Source:HGNC Symbol;Acc:HGNC:2
11	212592_at	-1.72	2e-16	3e-13	45 x 49 joining chain of multimeric IgA and IgM [Source:HGNC Symb
12	213831_at	-1.74	2e-16	3e-13	49 x 16 major histocompatibility complex, class II, DQ alpha 1 [Source
13	215049_x_at	-1.93	2e-16	3e-13	8 x 10 CD163 molecule [Source:HGNC Symbol;Acc:HGNC:1631]
14	217469_at	2.61	2e-16	3e-13	49 x 20 immunoglobulin heavy constant epsilon [Source:HGNC Symb
15	218186_at	2.28	2e-16	3e-13	0 x 17 RAB25, member RAS oncogene family [Source:HGNC Symb
16	209728_at	2.13	4e-16	5e-12	0 x 10 major histocompatibility complex, class II, DR beta 4 [Source:
17	209791_at	2.14	4e-16	5e-12	6 x 12 peptidyl arginine deiminase 2 [Source:HGNC Symbol;Acc:HG
18	205485_at	2.12	7e-16	5e-12	5 x 10 ryanodine receptor 1 [Source:HGNC Symbol;Acc:HGNC:104
19	215733_x_at	2.11	9e-16	2e-10	10 x 27 cancer/testis antigen 1A [Source:HGNC Symbol;Acc:HGNC:2
20	201839_s_at	2.03	1e-14	3e-10	1 x 19 epithelial cell adhesion molecule [Source:HGNC Symbol;Acc:

Global Geneset Analysis

Rank	GSZ	p-value	#all	Geneset
<i>Overexpressed</i>				
1	12.17	NULL	2240	Chromatin state 8_Fibroblasts
2	11.34	NULL	1813	Chromatin state 8_Fibroblasts
3	11.02	NULL	2374	Chromatin state 8_ReprPCWk_Fibroblasts
4	10.98	NULL	2375	Chromatin state 8_ReprPC_Fibroblasts
5	10.26	NULL	3724	Chromatin state 8_peripheral blood_12_EnhBiv
6	10.01	NULL	3734	Chromatin state 8_peripheral blood_13_ReprPC
7	9.84	NULL	1930	Chromatin state 8_ESSA
8	9.75	NULL	2148	Chromatin state 8_ReprPC_Skeletal_Muscle
9	9.59	NULL	2507	Chromatin state 8_testis_peripheral blood_13_ReprPC
10	9.34	NULL	1984	Chromatin state 8_ReprPC_Melanocytes
11	9.33	NULL	56	GSEA C2_KLEIN_PRIMARY_EFFUSION_LYMPHOMA_DN
12	9.28	NULL	1729	Chromatin state 8_Skeletal_Muscle
13	9.1	NULL	3150	Chromatin state 8_lymphocytes_peripheral blood_13_ReprPC
14	9.08	NULL	2408	Chromatin state 8_ReprPCWk_Skeletal_Muscle
15	9.08	NULL	2254	Chromatin state 8_ReprPC_MSC_Adipocyte
16	9.03	NULL	2602	Chromatin state 8_killer cells peripheral blood_12_EnhBiv
17	8.89	NULL	2417	Chromatin state 8_ReprPCWk_Melanocytes
18	8.85	NULL	3918	Chromatin state 8_peripheral blood_14_ReprPCWk
19	8.7	NULL	1747	Chromatin state 8_testis_peripheral blood_13_ReprPC
20	8.61	NULL	2867	Chromatin state 8_ReprPCWk_MSC_Adipocyte
<i>Underexpressed</i>				
1	-10.46	NULL	7225	Chromatin state 8_fetal_midbrain_ReprPC
2	-9.88	NULL	7420	Chromatin state 8_peripheral blood_1_TssA
3	-9.45	NULL	7635	Chromatin state 8_lymphocytes_peripheral blood_1_TssA
4	-9.43	NULL	1161	MF RNA binding
5	-9.08	NULL	7751	Chromatin state 8_killer cells peripheral blood_1_TssA
6	-8.99	NULL	4528	Chromatin state 8_lymphocytes_naive cells peripheral blood_4_Tx
7	-8.57	NULL	232	BP translation
8	-8.38	NULL	6099	Chromatin state 8_lymphocytes_Tx
9	-8.38	NULL	5456	Chromatin state 8_Neuronal_Progenitor
10	-8.29	NULL	1052	GSEA C2_DODD_NASOPHARYNGEAL_CARCINOMA_DN
11	-8.28	NULL	8200	Chromatin state 8_lymphocytes_peripheral blood_2_TssAFink
12	-8.01	NULL	8275	Chromatin state 8_Fibroblasts
13	-7.93	NULL	7833	Chromatin state 8_peripheral blood_1_TssA
14	-7.89	NULL	110	BP translational initiation
15	-7.75	NULL	4683	Chromatin state 8_fetal_midbrain_HetRpts
16	-7.72	NULL	7835	Chromatin state 8_lymphocytes_TssA
17	-7.67	NULL	5753	Chromatin state 8_peripheral blood_4_Tx
18	-7.58	NULL	6068	Chromatin state 8_ESC_Endoderm
19	-7.57	NULL	5738	Chromatin state 8_lymphocytes_peripheral blood_4_Tx
20	-7.57	NULL	110	GSEA C2_REACTOME_TRANSLATION

p-values

